

# The Updated Threatened and Priority Plants of the Pilbara App

Hayden Ajduk<sup>1</sup>, Steven Martin<sup>1</sup> & Steven Dillon<sup>2</sup>  
<sup>1</sup>Pilbara Environment and Cultural Knowledge Team, Rio Tinto Iron Ore, Perth, WA  
<sup>2</sup>Western Australian Herbarium, Department of Biodiversity, Conservation and Attractions

## Introduction

Officially launched in 2015, the *Rare and Priority Plants of the Pilbara* provided a valuable resource on the features, ecology and distribution of Rare and Priority listed flora taxa occurring in the Pilbara bioregion.

After remaining unchanged for nearly a decade, substantial updates to the flora listed in the App were required due to a variety of reasons. These included the addition of newly described taxa, changes in the taxonomy, changes in the knowledge of distributions and changes to conservation listings.

The App has been updated to reflect the latest scientific knowledge and field data for all Threatened and Priority listed plants of the Pilbara region. The App utilises information contributed by Rio Tinto botanists, herbarium staff, and numerous environmental consultancies. The App is available to the public free of charge and can used offline in remote locations.

## Key Changes to the App

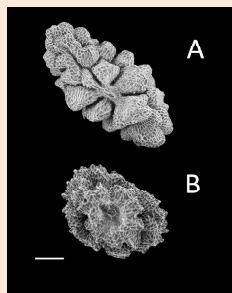
In total, 192 taxa are now included in the App compared to 168 taxa in the original version. Each taxon is described in detail including their features, ecology, distribution and associated photos.

The taxonomic description and ecology of each taxa was reviewed and updated to reflect the latest knowledge. Additional information on key characters was also added to assist in the identification of difficult taxa

The location maps for each taxon were updated to reflect changes in distributions based on the latest herbarium collections from the Pilbara IRBA region.



*Tetradlea butcheriana* growing on a rocky cliff in the Pilbara.



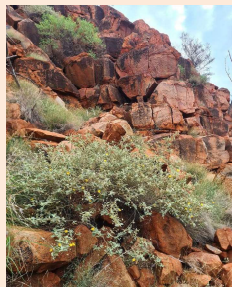
Electron scanning microscope photos of *Dolichocarpa* sp. Hammersley Station (A.A. Mitchell PRP 1479) and *Dolichocarpa crouchiana* seed.



*Eragrostis* sp. Mt Robinson (S. van Leeuwen 4109) — A taxon within the *Eragrostis eriopoda* complex.



*Ipomoea* sp. Karjini (H. Ajduk HAOP305) — A recently discovered taxon known only from a single location in Karjini National Park.



*Sida* sp. Barlee Range (S. van Leeuwen 1642) — Growing on hill slopes in Karjini National Park.



*Ipomoea racemigera* original distribution map



*Ipomoea racemigera* updated distribution map

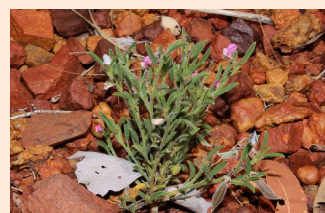
Twenty-one taxa in the App now feature field photographs that were not included in the previous edition. Photographs of key features as well as electron scanning microscope images were also added to further assist in the identification of certain taxa.

## New Taxa Added to the App

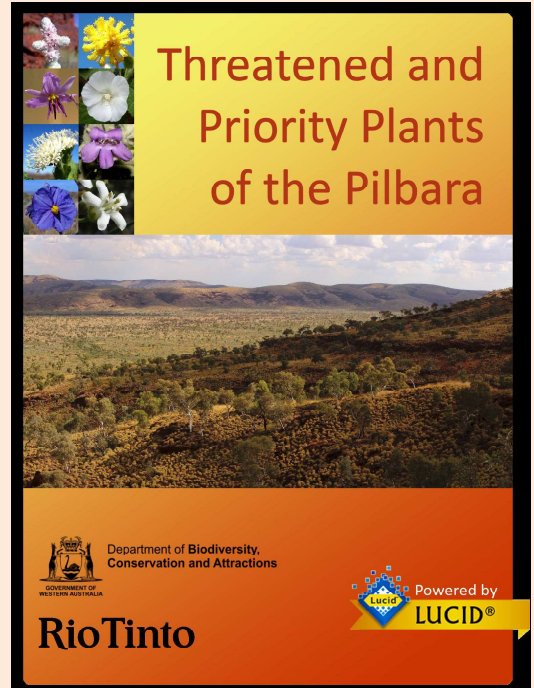
<i>Aponogeton queenslandicus</i>	<i>Paranatis</i> sp. Pilbara (H. Ajduk HAOP04a)
<i>Aristida polyclados</i>	<i>Rorippa</i> sp. Fortescue Valley (M.N. Lyons & R.A. Coppen FV 0760)
<i>Arthropodium vanleeuwenii</i>	<i>Samolus intricatus</i>
<i>Dipteracanthus chichesterensis</i>	<i>Schoenus coultasii</i>
<i>Dysphania congestiflora</i>	<i>Senna</i> sp. Barlee Range (S. van Leeuwen 1520)
<i>Eragrostis</i> sp. Erect spikelets (P.K. Latz 2122)	<i>Sida</i> sp. Turee Creek (P.-L. de Kock PLDK1116)
<i>Eremophila capricornica</i>	<i>Salanum</i> sp. Mosquito Creek (A.A. Mitchell et al. AAM 10795)
<i>Euploca argyrea</i>	<i>Salanum</i> sp. Red Hill (S. van Leeuwen et al. PBS S415)
<i>Gompholobium karjini</i>	<i>Salanum</i> sp. W Hammersley Range (S. Colwill & B. Duncan LCR99-01)
<i>Gompholobium</i> sp. Ray Hill (G. Buller ATF08 AQ14) 7353)	<i>Streptoglossa</i> sp. Cracking clays (S. van Leeuwen et al. PBS 7353)
<i>Gomphrena axillaris</i>	<i>Synostemon arenosus</i>
<i>Goodenia obscurata</i>	<i>Tephrosia lithosperma</i>
<i>Hibiscus</i> sp. Mulga Downs (S. Hitchcock SH 638)	<i>Tetradlea butcheriana</i>
<i>Indigofera roseola</i>	<i>Themeda</i> sp. Panorama (J. Nelson et al. NS 102)
<i>Indigofera rotula</i>	<i>Triodia chichesterensis</i>
<i>Ipomoea</i> sp. Karjini (H. Ajduk HAOP305)	<i>Triodia degreyensis</i>
<i>Isotropis forrestii</i>	<i>Triodia luteana</i>
<i>Josephinia</i> sp. Woodstock (A.A. Mitchell PRP 989)	<i>Triodia mallota</i>
<i>Kahautia australiensis</i>	<i>Triodia</i> sp. Pannawonica shale (P.J. Davidson PID 2026)
<i>Lindernia</i> sp. Pilbara (M.N. Lyons & L. Lewis FV 1069)	<i>Triodia veniciae</i>
<i>Neptunia longipila</i>	<i>Uvedalia clementii</i>



*Hibiscus* sp. Mt Brockman (E. Thoma ET 1354) — a striking Priority 1 flora species.



*Isotropis parviflora* — a reported disturbance specialist.



## Rio Tinto Iron Ore and the Western Australian Herbarium Partnership

Since 2007, Rio Tinto Iron Ore (Rio Tinto) has funded an Identification Botanist position at the Western Australian Herbarium (WAH).

This position helps provide key specialist taxonomic support for the thousands of flora specimens collected by Rio Tinto and its consultants. It provides a high level of confidence in the identification of Priority and Threatened specimens detailed in Rio Tinto reports, with all new Priority and Threatened populations verified by the Identification Botanist at the WAH.

In addition to taxonomic identifications, this role helps to facilitate the accession of vouchered specimens to the WAH collections. This significant process increases the number of specimens held in the collections, resulting in a more accurate understanding of flora species in Western Australia, including their distribution and preferred habitat.



Steve Dillon from the WAH in the field looking at a *Hibiscus* specimen.



Steve Dillon and Rio Tinto botanists working together on regional surveys for threatened flora.

## Threatened and Priority Plants of the Pilbara App QR Codes



Google Play Store



Apple App Store

## Acknowledgements

The Department of Biodiversity, Conservation and Attractions and Rio Tinto Iron Ore would like to thank the following individuals and companies for their contributions to the App: Kevin Thiele, Stephen van Leeuwen, Emil Thoma, Jeremy Naaykens, Bruce Maslin, Andrew Perkins, Johan Hurter, Adrienne Markey, Biota, Stantec, Biologic and SLR consulting.